

ShowZuikaku Guide

01 2024/06/06 By Tanzai

Overview **ShowZuikaku** is a plugin to show IJN Carrier Zuikaku in dynamic scenery of X-Plane with an airplane which has this plugin installed.

Requirements Applicable to the aircraft created with X-Plane 11 or later. The airplane created by X-Plane 10 or earlier may not operate even if it is refurbished.
This plugin can operate incorrectly depending on how the aircraft is created.
As carrier Zuikaku is old style only small propeller-driven plane operate correctly.
Arresting hook is not required. Plane stops when gears touche on carrier deck.
Use this plugin with your responsibilities, as you may rarely need to update X-Plane, if X-plane crash somehow when some file is dislocated.
This plugin may be redistributed for non commercial purposes only; derivative MAY NOT be redistributed.

Installation Save decompressed **ShowZuikaku** folder in **plugins** folder in airplane. If plugins folder does not exist, add new **plugins** folder.

How to use Start flight in some aircraft. Select a menu in **Plugins --> Start ZUIKAKU:** as follows.

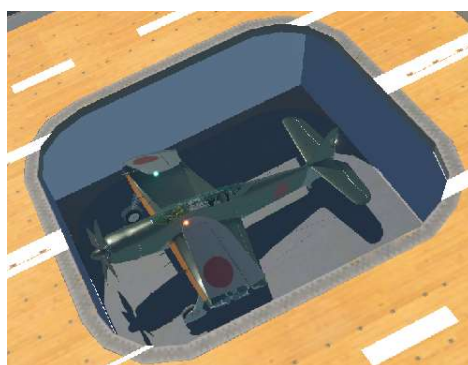


on board Airplane appears on the deck of Zuikaku.
Pressing space key lower or raise the elevator.
When engine stops, the plane moves forward or backward by pushing or pulling the joystick.

Tips:

Stop engine: F7 key

Start engine: Shift + Ctrl + e key



in approach Airplane appears in the air to land on carrier.
Gears, flaps and arresting hook (if any) extend fully automatically.
Control your joystick and throttle lever to land the airplane on the deck of carrier carefully.
The plane stops when gears touche down on the deck.



Credits This plugin uses 'SASLfree v3.16.4, 64 bit only' by '1-sim.com'. Let me express my heartfelt appreciation for your free distribution!